



## Specification Sheet

# Cummins RV Generator Onan QD 3200



### Features and Benefits

- Intended for RV OEM first fit applications only
- Computer-controlled constant speed operation - quiet diesel performance for smaller RVs.
- Special sound-controlling housing encloses cooling system and muffler.
- Double isolation mounting system reduces vibration.
- Easy, accessible maintenance points.
- Runs one rooftop air conditioner with power to spare.
- Integrated start/stop control with hour meter.

### Weight, Size and Sound Level

<b>Weight</b>	229 lbs	(104 kg)
<b>Length</b>	30.2 in	(766 mm)
<b>Width</b>	17.3 in	(439 mm)
<b>Height</b>	18 in	(458 mm)
<b>Sound</b>	72 dB(A)	Readings at 10 ft (3 m) half load

- Meets National Park Service sound level requirements (60 dB(A) @ 50 ft) for use in national parks.
- Typical installation will further reduce sound level.

### Models and Ratings

Model	Fuel	Hz	RPM	Watts	Voltage	Amps	Phase	Circuit breaker*
<b>3.2HDZAA-8508F</b>	Diesel	60	3200	3200	120	26.7	1	48 A

- Ambient conditions for rated power output with muffler and RV enclosure, per ISO 8528-1:

- Temperature: 77° F (25° C)
- Altitude: 500 ft (152.4 m), (99 kPa dry)
- Typical power output change based on ambient conditions:
- Temperature: Power output decreases 6% for every 10° F (5.5° C) increase
- Altitude: Power output decreases 3.5% for every 1000 ft (305 m) increase

\* Software controlled overload protection

### Operating Temperature Range

	Low	High
<b>Diesel</b>	32° F (0° C)	120° F (49° C)

- Ambient air temperature measurement.

---

## Standard Features

- 1 cylinder diesel engine
- Permanent magnet alternator
- Digital voltage regulation w/no adjustments required
- Integral enclosed muffler with stationary exhaust pipe connection point
- USDA-approved spark arrestor
- Sound insulated cover with cooling air inlet and outlet ducts
- Heavy-duty air cleaner
- Automotive type starter
- Hour meter
- Meets applicable U.S. EPA Tier 4F and California emissions standards
- Connector for remote operation
- Double isolation mounting system
- Terminal block connection for AC output
- Electric fuel pump
- Electronically governed fuel system
- Fuel filter
- Cleanable oil screen filter
- Service and maintenance through service doors
- Pure Sine Wave

## Control System

Microprocessor control  
Service diagnostics  
Maintenance reminders  
Over voltage, over speed and overload safety  
AC alternator over temp safety  
Automatic timed glow plug  
Remote LCD display with start/stop switches included  
Remote Display harness included – 26.2 ft (8 m)

## Engine Details

**Design:** 4-cycle, air-cooled diesel engine

**Cylinders:** 1, vertical

**Bore:** 3.15 in (80.0 mm)

**Stroke:** 2.72 in (69 mm)

**Displacement:** 21.16 in<sup>3</sup> (347 cm<sup>3</sup>)

**Compression Ratio:** 22:1

**Oil Capacity:** 1.2 qt (1.1 L)

---

## Average Fuel Consumption

Diesel	No load	Half load	Full load
3.2HDZAA	0.12 Gal/h (0.5 L/h)	0.22 Gal/h (0.8 L/h)	0.39 Gal/h (1.5 L/h)

---

## Alternator Details

**Design:** Permanent magnet

**Cooling:** Direct drive centrifugal blower; cast aluminum housing for excellent heat transfer

**DC Brushes:** None

**Exciter system:** None

---

## Generator Set Performance

### Air Conditioner Operation:

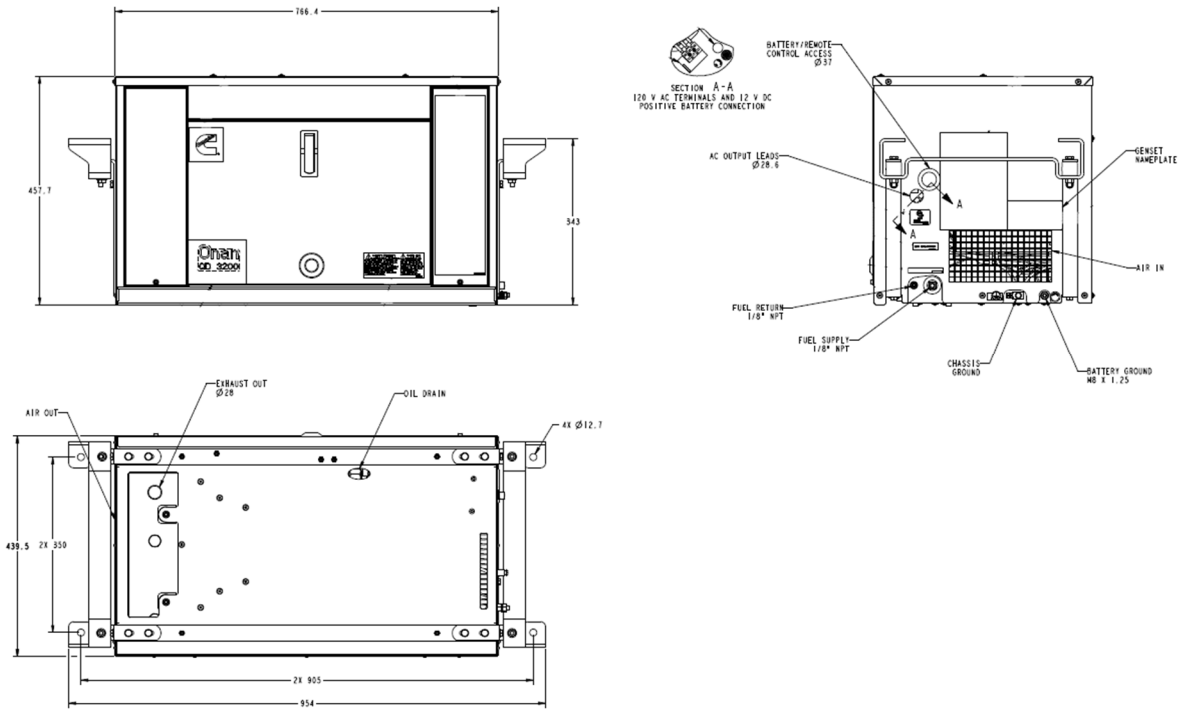
Will start and run one 12 A (steady-state) air conditioner with maximum in-rush current of 45 A and an additional load up to 1000 W at 100 F and 500 ft (152.4 m) altitude.

**Voltage Regulation:** Exceeds requirements of ANSI/RVIA EGS-1 ±10%

**Frequency Regulation:** Exceeds requirements of ANSI/RVIA EGS-1 ± 5%

# Basic Dimensions

Dimensions (mm)



**Note:** This outline drawing is provided for general reference only and is not intended for design or installation. For more information see Operation and Installation manuals or obtain A066F981 drawing from your distributor/dealer.

## Testing for RV Application

- Tested at extremes of temperature 32 °F (0 °C) to 120 °F (49 °C) for starting and operation
- Tested with RV loads
- Tested in high humidity conditions
- Tested in salt spray conditions
- Tested in heavy airborne dust conditions
- Listed by SGS United States Testing Company, Inc. per ANSI/RVIA EGS-1 and CSA-certified per Std. 100 Motors and Generators and TIL RV-06.
- This generator set was designed and manufactured in facilities certified to ISO 9001
- Meet applicable U.S. EPA and California emissions standards



## Warranty Policy

The limited warranty covers any failures of the product resulting from a defect in material or factory workmanship under normal use and service for 3 years from warranty start date or 2,000 hours, whichever occurs first. During the first two years, parts and labor will be covered for all warrantable failures except routine maintenance. During the third year, parts and labor will be covered for major powertrain and generator components. This 3-year, 2000-hour warranty coverage applies to RV generator sets used in RV application. For RV generators used in non-RV application, warranty coverage duration is 1 year from warranty start date or 1,000 hours, whichever occurs first. Warranty coverage will be void for HDZAA generators used in non-RV applications.

## After Sale Support

### Complete Line of Parts and Accessories:

Cummins Inc. offers replacement and tune-up parts, accessories, oil and maintenance chemicals - all specially designed to help keep your Onan generator set running at peak performance. Cummins Inc. also provides genuine Green Label Parts™ that exactly match generator set specifications and will help maximize power output and extend the life of your generator set.



### Largest Distributor/Dealer Support

**Network:** Onan generator sets are supported by the largest and best trained worldwide authorized distributor/dealer network in the industry. This network of knowledgeable Cummins distributor/dealers will help you select and install the right generator set and accessories to meet the requirements of your specific application. This same network offers a complete selection of commonly used generator set maintenance parts, accessories and products plus manuals and specification sheets. They can answer your questions regarding proper operation, maintenance schedules and more.

**Manuals:** Operation and installation manuals ship with the generator set. To obtain additional copies or other manuals for this model, see your Cummins sales or service representatives and request the following manual numbers: Operator (A066T111), Installation (A066T110), Parts (A066T112), Service (A066T113). To easily locate the nearest Cummins distributor/dealer in your area, or for more information, contact us at 1-800-CUMMINS, or [www.power.cummins.com](http://www.power.cummins.com)

**! WARNING:**  
Do not use this generator set on a boat. Such use may violate U.S. Coast Guard regulations, and can result in severe personal injury or death from fire, explosion, electrocution, or carbon monoxide poisoning.

**! WARNING:**  
Back feed to a utility system can cause electrocution and/or property damage. Do not connect to any building electrical except through an approved device or after building main breaker is open.

Contact your distributor/dealer for more information.



Cummins Inc.  
Box 3005  
Columbus, IN 47202-3005  
U.S.A  
1-800-CUMMINS™ (1-800-286-6467)  
[cummins.com](http://cummins.com)

©2021 Cummins Inc. All rights reserved.  
Specifications are subject to change without notice. A-1501 (03/21)