



# Spark ignited generator set 50 kW standby



## Features and benefits

- Extremely quiet operation
- Fully automatic operation when used with a Cummins automatic transfer panel
- Available for use with natural gas or LP vapor
- Attractive and discreet sound attenuated housing
- Electronic governor for precise frequency control
- Includes 120 V coolant heater
- Listed to UL 2200
- EPA certified for dual fuel
- Aluminum or steel enclosure for best anti-corrosion performance
- OSHPD seismic certified

## Weight, size and sound level

**Weight:** 2634 lbs (1195 kg) with aluminum enclosure; 2891 lb (1311 kg) with steel enclosure

**Size:** Length 101.5 in (2578 mm), width 41.3 in (1049 mm), height 71.8 in (1824 mm)

**Sound:** 67 dB(A) at 7 m, average at full load with aluminum enclosure; 65 dB(A) at 7 m, average at full load with steel enclosure

## Models and ratings

Order model	Fuel	Voltage	Phase	Rated kW	kVA	Rated amps	Circuit breaker	Enclosure
GGPC	Natural gas	120/240	1	45	45	375/187.5	200 A, 2 pole	Aluminum or steel
	Propane	120/240	1	50	50	416.7/208.3	200 A, 2 pole	Aluminum or steel
	Natural gas	120/208	3	45	45	270.9/156.3	200 A, 3 pole	Aluminum or steel
	Propane	120/208	3	50	50	301.1/173.7	200 A, 3 pole	Aluminum or steel

- Ratings apply at 1300 ft (396m), 104 °F (40 °C). Total power available will decrease 4% for each 1000 ft (304.8 m) above 1300 ft (396m) and 2% for each 10 °F (5.5 °C) increase in ambient temperature above 104 °F (40 °C).

## Standard features

### Engine:

- Electronic ignition
- Electronic governor
- Full-pressure lubrication
- High-capacity oil sump
- Single spin-on canister-combination full flow with bypass
- Solenoid shift starter
- 120 V coolant heater
- Engine oil drain extension

### Control system:

Provides total genset system integration including:

- Automatic remote starting/stopping
- Precise frequency and voltage regulation
- Alarm and status message display
- AmpSentry™ protection
- Output metering
- Auto-shutdown at fault detection
- NFPA 110 Level 1 compliance
- Low coolant level shut-down

### Exhaust muffler:

- Enclosed exhaust silencer
- Low noise

## Engine details

**Engine:** GM industrial, spark-ignited

**Design:** Cast iron V8 cylinder, liquid-cooled

**Compression ratio:** 9.4:1

**Displacement:** 5 L (305 in<sup>3</sup>)

**Cooling system:** 122° F (50 °C) ambient cooling system

**Oil sump capacity:** 5.8 qt

**Operating speed:** 1800 RPM

**Gross engine power output, kWm (bhp):**

Natural gas: 57.6 (77.3)

Propane: 63.6 (85.3)

## Average fuel consumption

### Fuel consumption – natural gas

Load:	1/4	1/2	3/4	Full
Ft <sup>3</sup> /hr	261.8	380.8	499.8	642.6
M <sup>3</sup> /hr:	7.4	10.8	14.2	18.2

### Fuel consumption - propane

Load:	1/4	1/2	3/4	Full
Ft <sup>3</sup> /hr	105.1	162.3	221.3	278.5
M <sup>3</sup> /hr:	3.0	4.6	6.3	7.9

## Alternator details

**Design:** Brushless, revolving field, 12 lead re-connectable, single phase design.

**Insulation system:** Class H per NEMA MG1-1.65.

**Temperature rise:** At rated load is less than 125 °C at standby rating, per NEMA MG1.22.40, IEEE 115 and IEC 34-1.

**Exciter type:** The excitation system derives its power from the main output of the generator, eliminating the need for a separate excitation power source.

**Alternator cooling:** Direct drive centrifugal blower.

**Rotor:** Supported by a pre-lubricated maintenance-free ball bearing.

**AC wave form total harmonic distortion:** Less than 5% total no load to full load, less than 3% for any single harmonic.

## Generator set performance

**Governor regulation class:** ISO 8528 Part 1 Class G3

**Voltage regulation:** 1%, no load to full load.

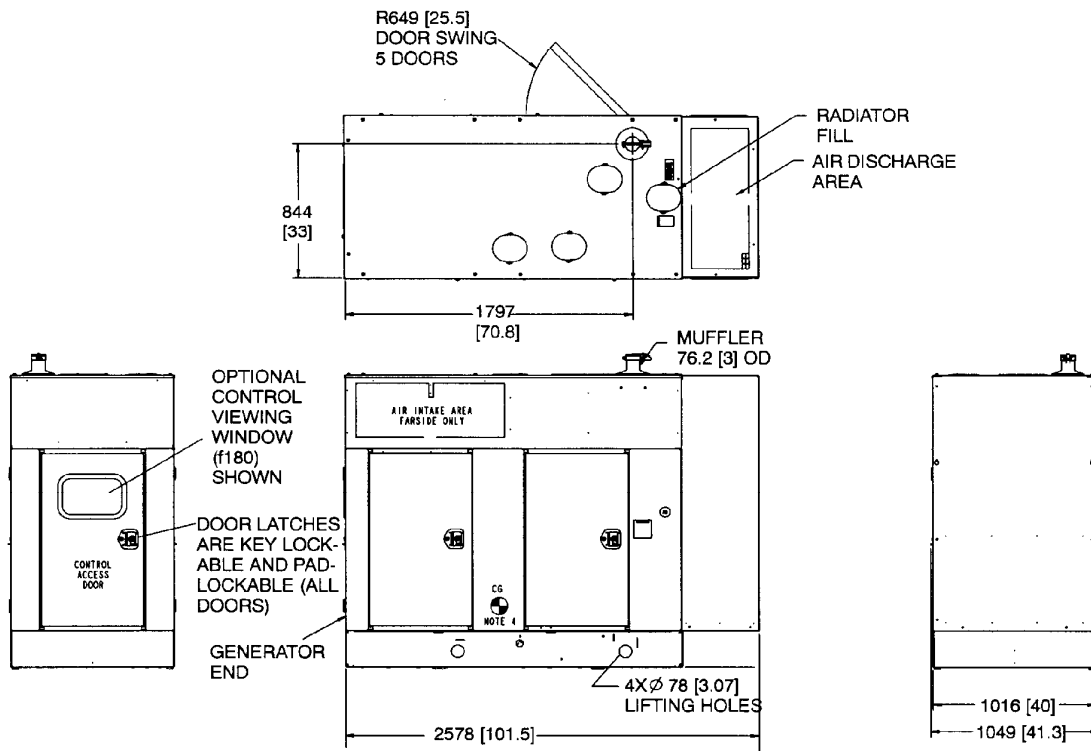
**Frequency regulation:** Isochronous, 0% no load to full load.

**Operating temperature:** -20 °F (-28.8 °C) to 122 °F (50 °C).

**Motor starting kVA (at 90% sustained voltage):** 130

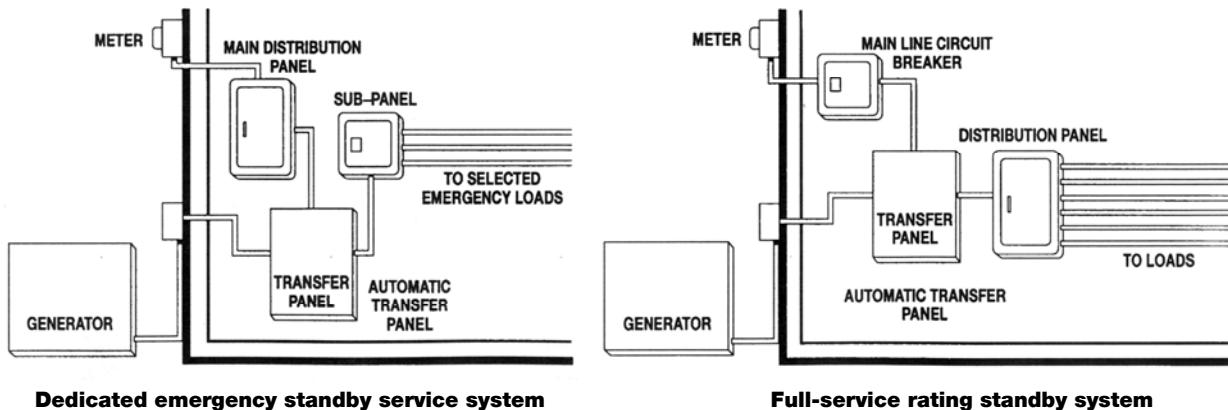
## Basic dimensions

Dimensions: mm/in



**Note:** This outline drawing is provided for general reference only and is not intended for design or installation. For more information see Operation and Installation manuals.

## Automatic transfer panel configurations



## Options and accessories

- Battery, 12 V, 620 cca (P/N 416-0823)
- Battery heater kit (P/N 333-0469)
- Full line of complementing automatic transfer panels

## Housing features

- Sound attenuated, weather protective design, key-lockable service access doors
- Internal starting battery tray and tie down
- Heavy-duty aluminum or steel housing, stainless steel fasteners

**Our energy working for you.™**

©2015 Cummins Inc. | A-1563d (8/15)

power.cummins.com  
cumminsonan.com

## Testing and standards

- Listed to UL 2200
- This generator set was designed and manufactured in facilities certified to ISO 9001.
- All low voltage models are CSA certified to product class 4215-01.





U.S. EPA

## Warranty policy

Cummins generators come with a standard two-year warranty. Additional two and five-year warranty options are available. Some restrictions apply.

This product is EPA Emissions certified for emergency standby use only.

 <b>WARNING:</b>
Standby rating based on: Applicable for supplying emergency power for the duration of normal power interruption. No sustained overload capability is available for this rating. (Equivalent to fuel stop power in accordance with ISO3046, AS2789, DIN6271 and BS5514.) nominally rated.

 <b>WARNING:</b>
Back feed to a utility system can cause electrocution and/or property damage. Do not connect to any building electrical except through an approved device or after building main breaker is open.

## After sale support

### Largest distributor/dealer support network

Cummins generator sets are supported by the largest and best trained worldwide certified distributor/dealer network in the industry. This network of knowledgeable Cummins distributor/dealers will help you select and install the right generator set and accessories to meet the requirements of your specific application. This same network offers a complete selection of commonly used generator set maintenance parts, accessories and products plus manuals and specification sheets. Plus, they can answer your questions regarding proper operation, maintenance schedules and more.

**Manuals:** Operation and installation manuals ship with the generator set. To obtain additional copies or other manuals for this model, see your Cummins distributor/dealer.

To easily locate the nearest Cummins distributor/dealer for Cummins generators in your area, or for more information, contact us at 1-800-344-0039 or visit [www.cumminsonan.com](http://www.cumminsonan.com) or [www.cumminspower.com](http://www.cumminspower.com).

**Contact your distributor/dealer for more information.**

North America  
1400 73rd Avenue N.E.  
Minneapolis, MN 55432  
USA

Phone 763 574 5000  
Fax 763 574 5298

**Our energy working for you.™**

©2015 Cummins Inc. All rights reserved.

Cummins is a registered trademark of Cummins Inc.

"Our energy working for you." is a trademark of Cummins Power Generation. Other company, product, or service names may be trademarks or service marks of others. Specifications are subject to change without notice.

A-1563d (8/15)



[power.cummins.com](http://power.cummins.com)  
[cumminsonan.com](http://cumminsonan.com)