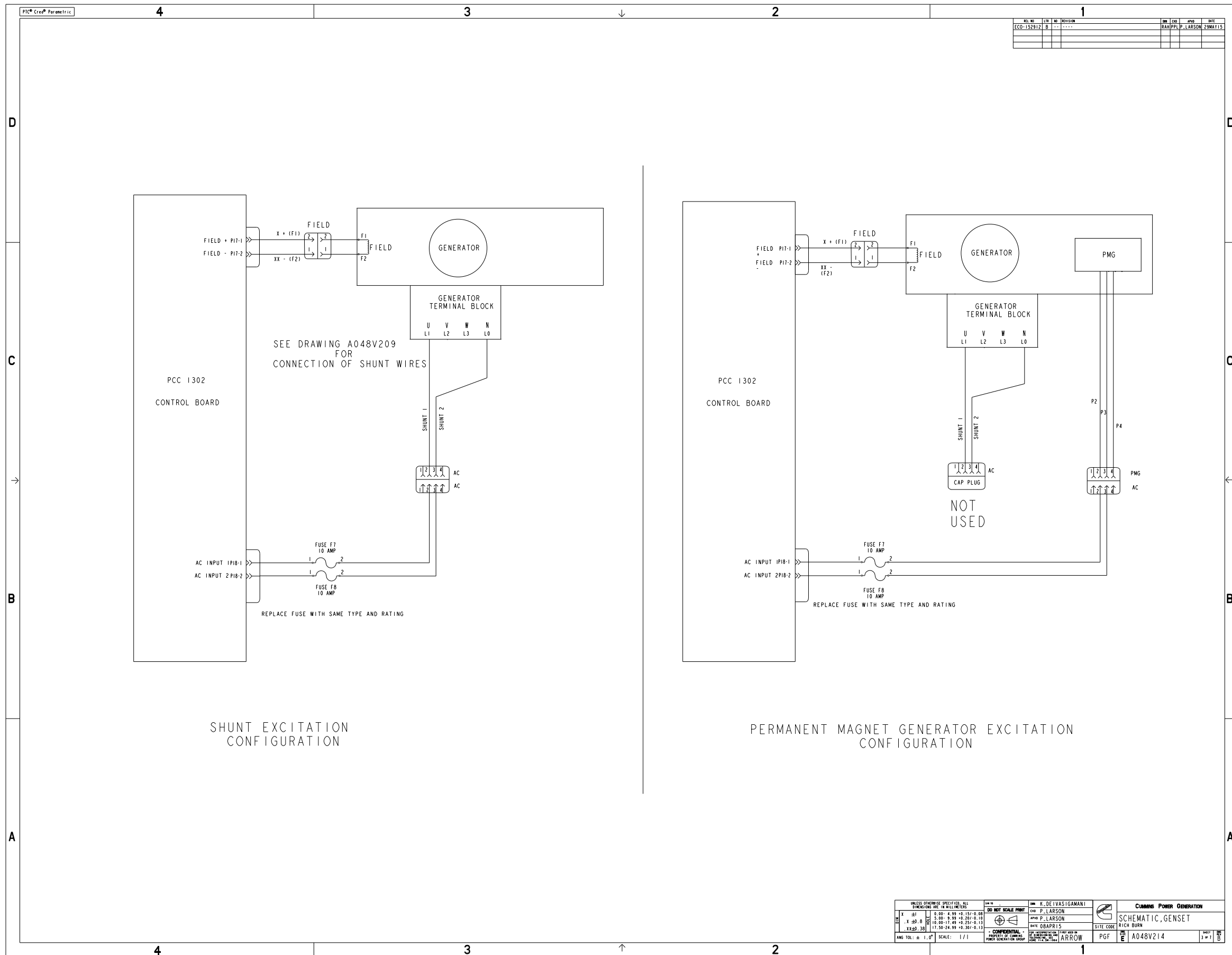
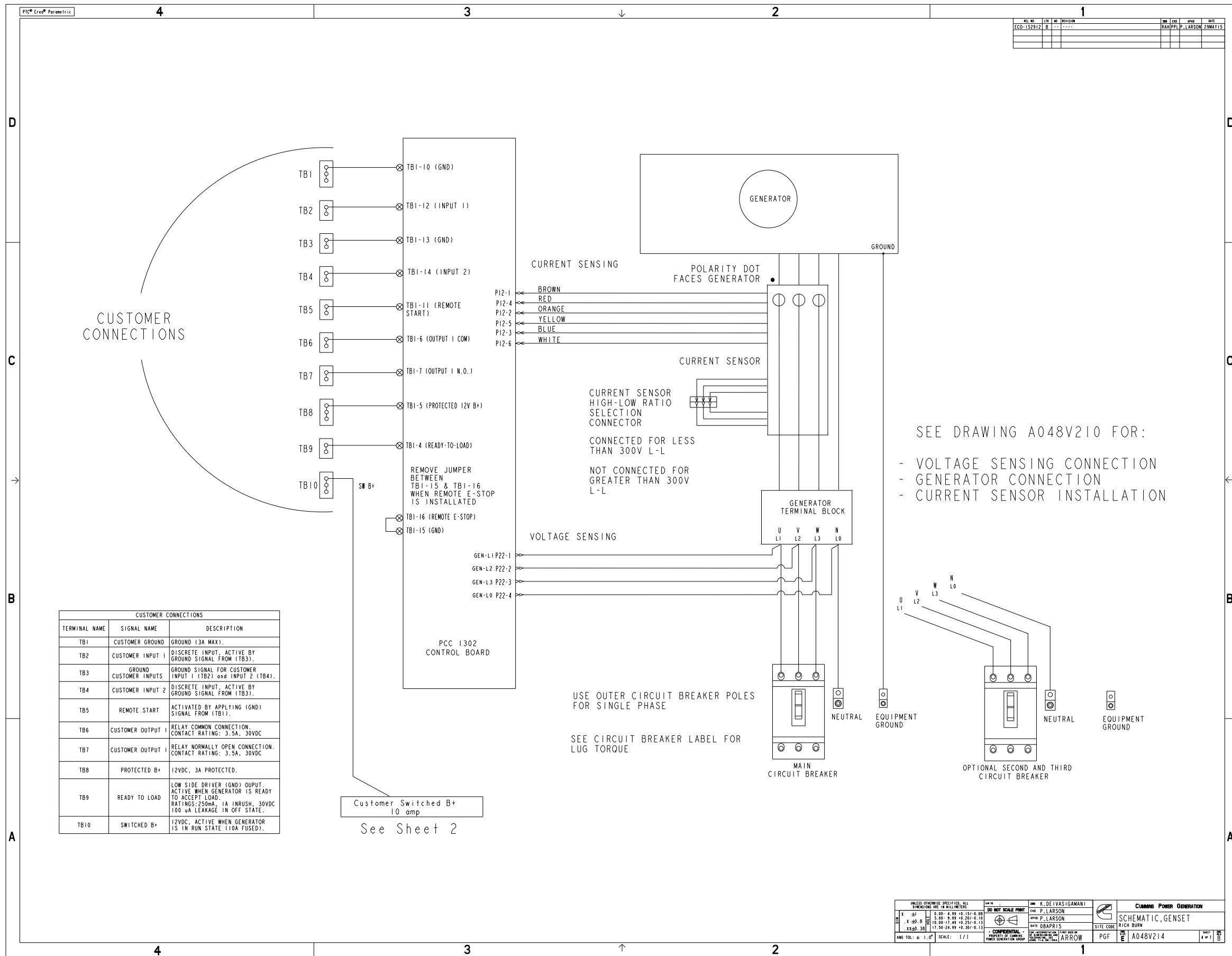


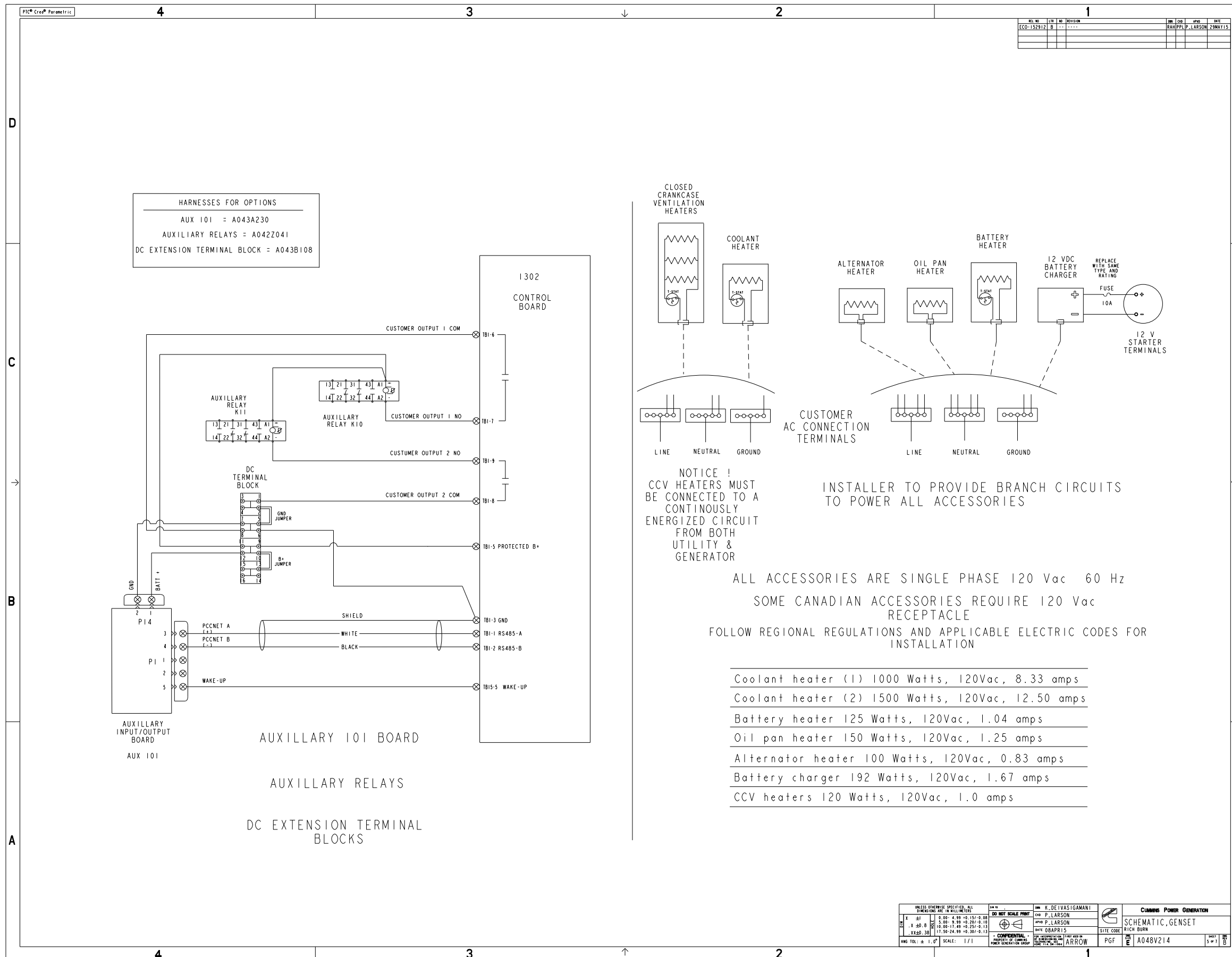
UNLESS OTHERWISE SPECIFIED, ALL DIMENSIONS ARE IN MILLIMETERS		DO NOT SCALE PRINT		CUMMINS POWER GENERATION	
ANG TOL: ± 0.13	SCALE: 1/1	DATE: 08APR15	PGF: E	SCHEMATIC, GENSET	
PROPERTY OF CUMMINS POWER GENERATION GROUP		SITE CODE: A048V214		RICH BURN	
CONFIDENTIAL		ARROW		2 of 1	



REV. NO.	DATE	BY	CHKD.	APPD.	DATE
ECO-152912	B			RAJAPPA P. LARSON	29MAY15

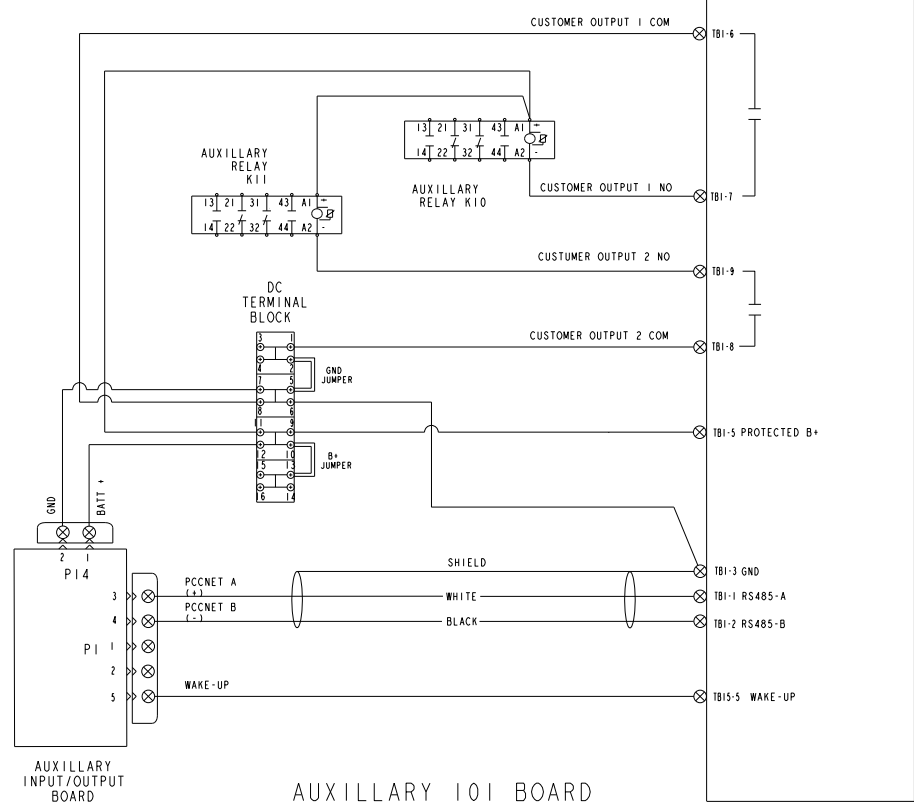
UNLESS OTHERWISE SPECIFIED, ALL DIMENSIONS ARE IN MILLIMETERS		DO NOT SCALE PRINT		DESIGNED BY: K. DEIVASIGAMANI	
SCALE: 1/1		DATE: 08APR15		CHECKED BY: P. LARSON	
ANG TOL: ± 0.1°		DATE: 08APR15		APPROVED BY: P. LARSON	
		SITE CODE: RICH BURN		PROPERTY OF CUMMINS POWER GENERATION GROUP	
		PGF: A048V214		SHEET: 3 of 8	



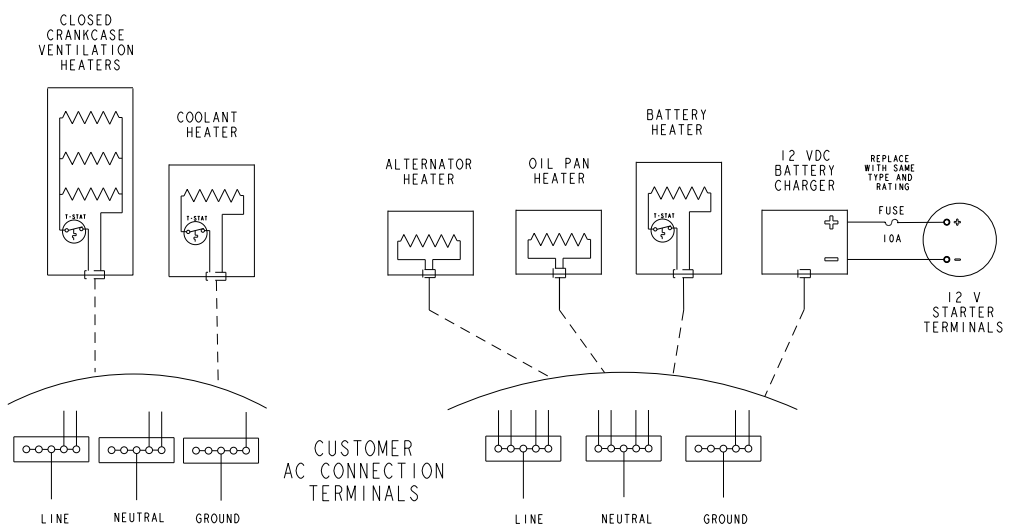


HARNESSES FOR OPTIONS
 AUX 101 = A043A230
 AUXILIARY RELAYS = A042Z041
 DC EXTENSION TERMINAL BLOCK = A043B108

1302
 CONTROL BOARD



AUXILLARY 101 BOARD
 AUXILLARY RELAYS
 DC EXTENSION TERMINAL BLOCKS



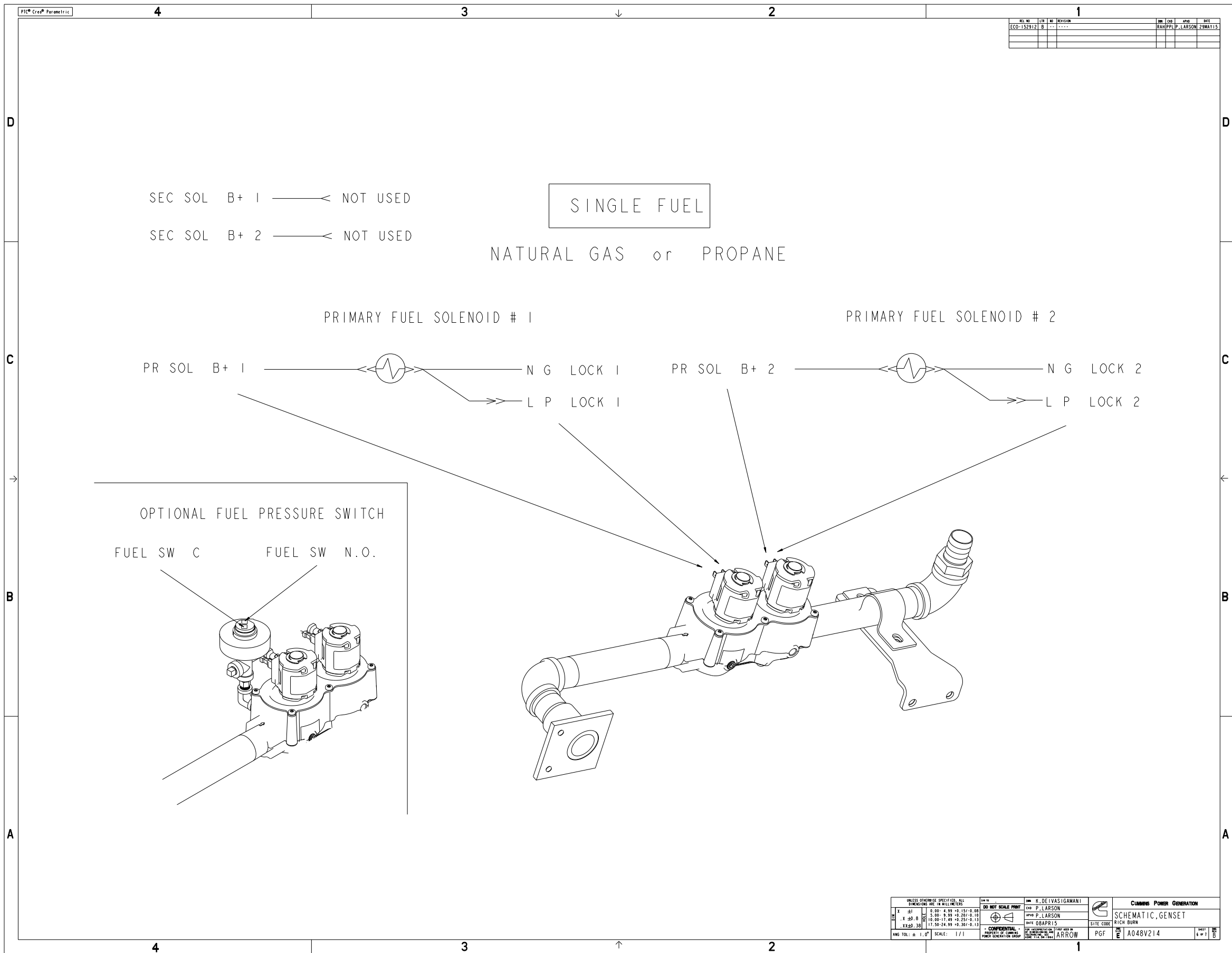
NOTICE !
 CCV HEATERS MUST BE CONNECTED TO A CONTINUOUSLY ENERGIZED CIRCUIT FROM BOTH UTILITY & GENERATOR

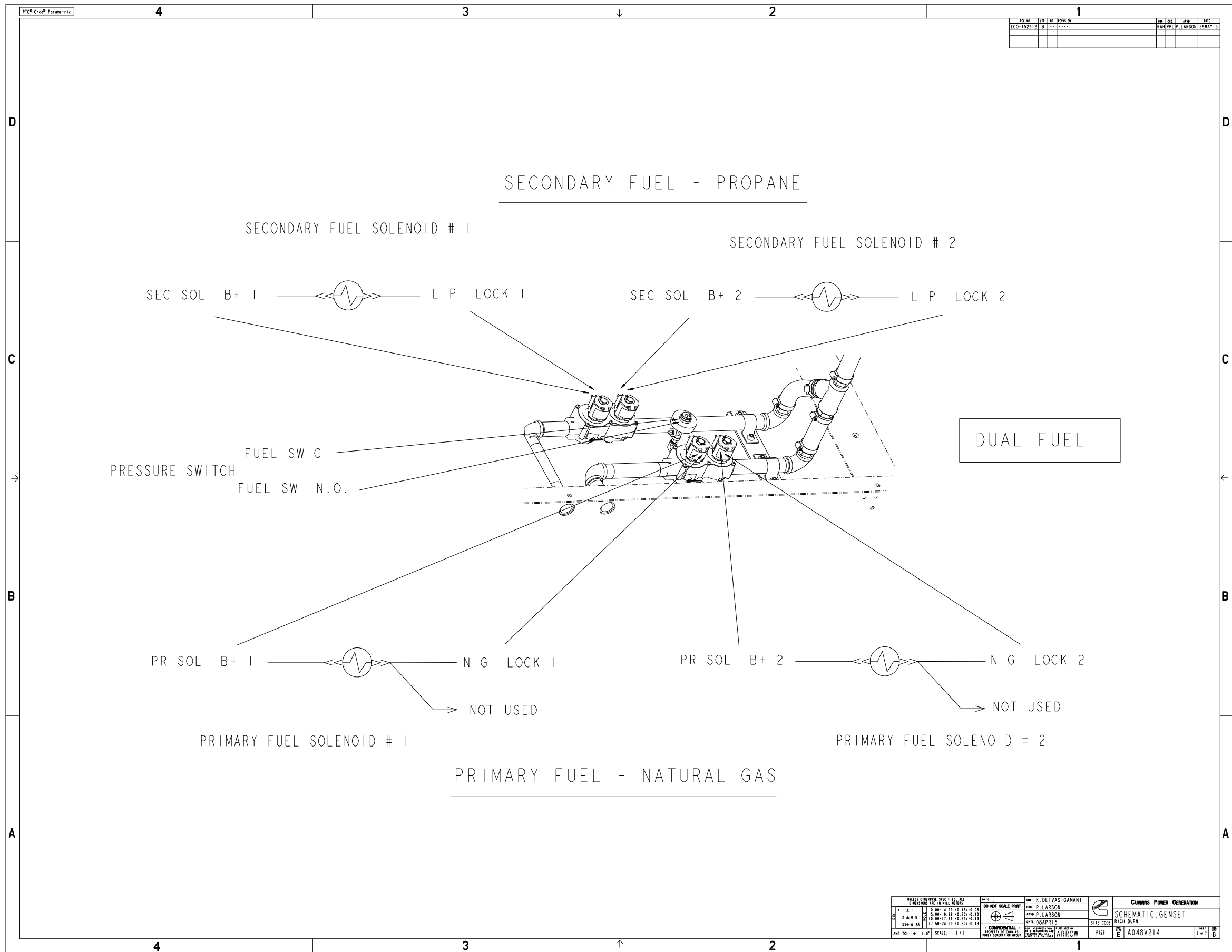
INSTALLER TO PROVIDE BRANCH CIRCUITS TO POWER ALL ACCESSORIES

ALL ACCESSORIES ARE SINGLE PHASE 120 Vac 60 Hz
 SOME CANADIAN ACCESSORIES REQUIRE 120 Vac RECEPTACLE
 FOLLOW REGIONAL REGULATIONS AND APPLICABLE ELECTRIC CODES FOR INSTALLATION

Coolant heater (1)	1000 Watts, 120Vac, 8.33 amps
Coolant heater (2)	1500 Watts, 120Vac, 12.50 amps
Battery heater	125 Watts, 120Vac, 1.04 amps
Oil pan heater	150 Watts, 120Vac, 1.25 amps
Alternator heater	100 Watts, 120Vac, 0.83 amps
Battery charger	192 Watts, 120Vac, 1.67 amps
CCV heaters	120 Watts, 120Vac, 1.0 amps

UNLESS OTHERWISE SPECIFIED, ALL DIMENSIONS ARE IN MILLIMETERS	DO NOT SCALE PRINT	DATE: 08APR15	SCALE: 1/1
ANG TOL: ± 0.10°	PROPERTY OF CUMMINS POWER GENERATION GROUP	DATE: 08APR15	SCALE: 1/1
REV	DATE	BY	CHK
1	08-04-15	APR P. LARSON	K. DEIVASIGAMANI
2	11-04-15	APR P. LARSON	APR P. LARSON
3	11-04-15	APR P. LARSON	APR P. LARSON
4	11-04-15	APR P. LARSON	APR P. LARSON
5	11-04-15	APR P. LARSON	APR P. LARSON
6	11-04-15	APR P. LARSON	APR P. LARSON
7	11-04-15	APR P. LARSON	APR P. LARSON
8	11-04-15	APR P. LARSON	APR P. LARSON
9	11-04-15	APR P. LARSON	APR P. LARSON
10	11-04-15	APR P. LARSON	APR P. LARSON
11	11-04-15	APR P. LARSON	APR P. LARSON
12	11-04-15	APR P. LARSON	APR P. LARSON
13	11-04-15	APR P. LARSON	APR P. LARSON
14	11-04-15	APR P. LARSON	APR P. LARSON
15	11-04-15	APR P. LARSON	APR P. LARSON
16	11-04-15	APR P. LARSON	APR P. LARSON
17	11-04-15	APR P. LARSON	APR P. LARSON
18	11-04-15	APR P. LARSON	APR P. LARSON
19	11-04-15	APR P. LARSON	APR P. LARSON
20	11-04-15	APR P. LARSON	APR P. LARSON
21	11-04-15	APR P. LARSON	APR P. LARSON
22	11-04-15	APR P. LARSON	APR P. LARSON
23	11-04-15	APR P. LARSON	APR P. LARSON
24	11-04-15	APR P. LARSON	APR P. LARSON
25	11-04-15	APR P. LARSON	APR P. LARSON
26	11-04-15	APR P. LARSON	APR P. LARSON
27	11-04-15	APR P. LARSON	APR P. LARSON
28	11-04-15	APR P. LARSON	APR P. LARSON
29	11-04-15	APR P. LARSON	APR P. LARSON
30	11-04-15	APR P. LARSON	APR P. LARSON
31	11-04-15	APR P. LARSON	APR P. LARSON
32	11-04-15	APR P. LARSON	APR P. LARSON
33	11-04-15	APR P. LARSON	APR P. LARSON
34	11-04-15	APR P. LARSON	APR P. LARSON
35	11-04-15	APR P. LARSON	APR P. LARSON
36	11-04-15	APR P. LARSON	APR P. LARSON
37	11-04-15	APR P. LARSON	APR P. LARSON
38	11-04-15	APR P. LARSON	APR P. LARSON
39	11-04-15	APR P. LARSON	APR P. LARSON
40	11-04-15	APR P. LARSON	APR P. LARSON
41	11-04-15	APR P. LARSON	APR P. LARSON
42	11-04-15	APR P. LARSON	APR P. LARSON
43	11-04-15	APR P. LARSON	APR P. LARSON
44	11-04-15	APR P. LARSON	APR P. LARSON
45	11-04-15	APR P. LARSON	APR P. LARSON
46	11-04-15	APR P. LARSON	APR P. LARSON
47	11-04-15	APR P. LARSON	APR P. LARSON
48	11-04-15	APR P. LARSON	APR P. LARSON
49	11-04-15	APR P. LARSON	APR P. LARSON
50	11-04-15	APR P. LARSON	APR P. LARSON





REV	NO	DATE	BY	CHKD	APP'D	DATE
ECO-152912	B	---	---	---	---	---

UNLESS OTHERWISE SPECIFIED, ALL DIMENSIONS ARE IN MILLIMETERS		DO NOT SCALE PRINT		K. DEIVASIGAMANI		CUMMINS POWER GENERATION	
1 ± 0.1	2.00 - 4.99 ± 0.13 / 0.09	3 ± 0.1	5.00 - 9.99 ± 0.20 / 0.10	4 ± 0.1	10.00 - 14.99 ± 0.25 / 0.13	5 ± 0.1	15.00 - 24.99 ± 0.30 / 0.15
ANG TOL: ± 1.0°	SCALE: 1/1	CONFIDENTIAL PROPERTY OF CUMMINS POWER GENERATION GROUP		DATE: 08APR15	DATE: 08APR15	SITE CODE: RICH BURN	PGF: A048V214
				DATE: 08APR15		DATE: 08APR15	

Part A048V214 B

Description	Legacy Name	External Regulations	Application Status	Release Phase Code	Security Classification	Alternates
SCHEMATIC,GENSET	A048V214	None	Production Only	Production	Proprietary	

Part Specifications :A048V214 B

Name	Description	Legacy Name
A030B356	SPECIFICATION,MATERIAL	CES10903
A048V215	DRAWING,ENGINEERING	A048V215